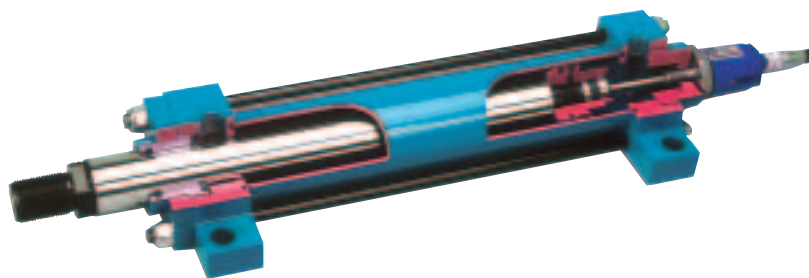
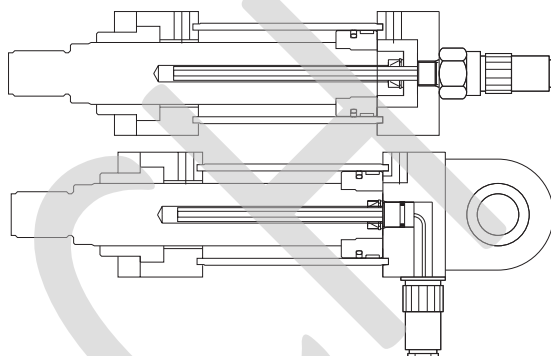
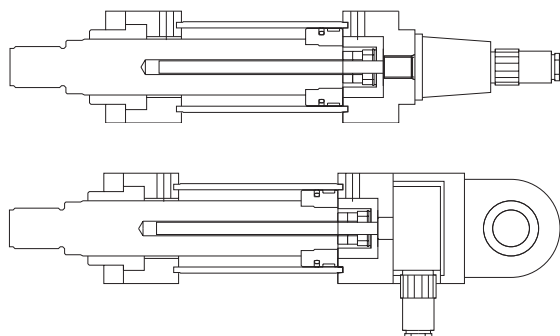


Hydraulické servovalce



SERVO VALCE TYP **M** S PREVODNIKOM TEMPOSONICKYM

SERVO VALCE TYP **P** S PREVODNIKOM POTENCIOMETRICKYM



SPECIFICATIONS

| Kod | Typ prevodníka | Výstup | Napätie | Roslisenie | Linearita | Opakovateľnosť | Hysteresia | Absorpcia | Max rýchlosť | Teplota | Max vysunutie |
|-----|----------------|-----------------------------------|-----------------|------------|---|---|--------------------|-----------|--------------|------------|---------------|
| MV | Temposonic | 0-10 V | 24V DC | Nekonecne | $\leq \pm 0.05\%$ F.S. min ± 0.05 mm | $\leq \pm 0.01\%$ F.S. min ± 0.0025 mm | $\leq \pm 0.02$ mm | 80 mA | 2 m/s | -20 +65 °C | 2000 mm |
| MA | Temposonic | 4-20 mA | 24V DC | Nekonecne | $\leq \pm 0.05\%$ F.S. min ± 0.05 mm | $\leq \pm 0.01\%$ F.S. min ± 0.0025 mm | $\leq \pm 0.02$ mm | 80 mA | 2 m/s | -20 +65 °C | 2000 mm |
| MS | Temposonic | SSI (Synchronic Serial Interface) | 24V DC | 0.005 mm | $\leq \pm 0.02\%$ F.S. min ± 0.05 mm | $\leq \pm 0.01\%$ F.S. min ± 0.0025 mm | | 70 mA | 2 m/s | -20 +65 °C | 2000 mm |
| PV | Potenciometer | | Max napätie 60V | Nekonecne | -0.001 | | | | 1 m/s | -20 +70 °C | 500 mm |

OBJEDNAVACI KOD

| TD | MV | 50 / 36 | A | 500 | Y | | |
|-----|-----------|---------------------|---------------------------|-------|----------|---------------------|-------------------------------|
| Typ | Prevodník | Vrtanie / Piestnica | Upevnenie | Zdvih | Tesnenia | Ukoncenie piestnice | Typ upevnenia |
| TD | MV | 40 28 | Predne zavítové diery | MX5 | X | Y Nizke trenie | Vonkajsi zavít standard |
| TK | MA | 50 28 | Priruba | ME5 | A | W Vitor® | SF Vnutorny zavít |
| | MS | 63 28 | Patky | MS2 | E | | ST Cap |
| | PV | 63 36 | Kyvne ulozenie zadne | MT1 | G | | SL Vonkajsi zavít - DIN 24554 |
| | | 45 36 | | | | | |
| | | 80 45 | Stredne kyvne ulozenie | MT4 | H | | |
| | | 56 56 | | | | | |
| | | 100 45 | Kyvne ulozenie zadne | MT2 | L | | |
| | | 56 70 | Predlzene predne svorniky | MX3 | R | | |
| | | 125 56 | | | | | |
| | | 90 70 | Klbove oko | MP5 | D | | |
| | | TK 160 70 | Kyvna priruba | MP1 | M | | |
| | | 110 90 | Priruba zadna | MF6 | B | | |
| | | 200 90 | | | | | |
| | | 110 140 | zadne zavítové diery | MX6 | T | | |

Prevedenia nutne konzultovat