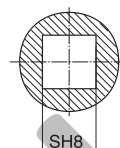
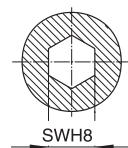
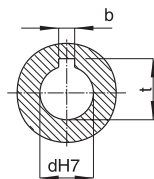
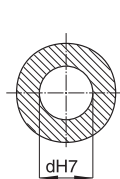
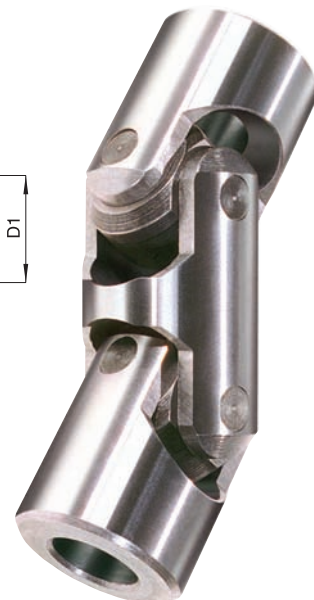
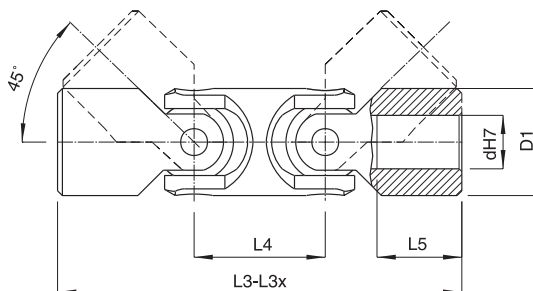
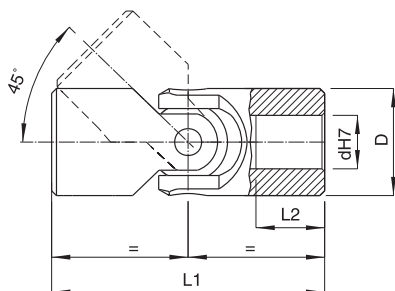


# Vysoko presne kardanove klby z nerezovej ocele

Jednoduche max.  $\alpha$  45° - Dvojite max.  $\alpha$  90°



Vyrobene z nerezovej ocele X5CrNi1810  
pouzitie hlavne v potravinarskom a farmaceutickom priemysle

JEDNODUCHE KLBY					DVOJITE KLBY						MOZNE VRTANIE		
TYP	dh7	D	L1	L2	TYP	dh7	D1	L3	L4	L5	S	SWH8	bxt
100X	5	10	44	15	-	-	-	-	-	-	-	5	-
101X	6	13	50	18	-	-	-	-	-	-	6	-	-
102X	8	16	58	19	-	-	-	-	-	-	8	8	2x9
103X	10	22	76	25	-	-	-	-	-	-	10	10	3x11,4
104X	12	25	86	29	104DX	12	22	105	29	25	12	12	4x13,8
105X	14	29	90	30	105DX	14	25	119	33	29	14	14	5x16,3
106X	16	32	95	30	106DX	16	29	125	35	30	16	16	5x18,3
107X	18	37	108	35	107DX	18	32	134	39	30	18	18	6x20,8
108X	20	40	108	32	108DX	20	40	154	46	32	20	20	6x22,8
109X	22	47	127	38	109DX	22	40	173	46	38	22	22	6x24,8
110X	25	50	140	44	110DX	25	50	199	59	44	25	25	8x28,3
111X	30	58	178	58	111DX	30	58	244	66	58	30	30	8x33,3

TYP	Otacky / min.							
	100	200	300	400	500	700	800	
100X	3,6	3,3	2,8	2,5	2,3	-	-	
101X	4,4	4,4	3,5	3,2	2,9	-	-	
102X	8,6	6	5,3	4,6	4	3,4	3,1	
103X	12,3	8,3	7	6,4	5,8	5,2	3,5	
104X	21	12,6	10	8	7,3	6,3	5,8	
105X	33	21,3	19,3	17,6	16,3	13,3	12,6	
106X	45	42	35,3	28	25,3	20	17,3	
107X	76	60	46,6	35,3	29,3	23,3	-	
108X	117	84	58,6	46,6	41,3	29,3	-	
109X	146	96	70	58,6	46,6	35,3	-	
110X	192	120	84	72	60	48	-	
111X	216	132	96	78	66	-	-	

PRAC. UHOL $\alpha$	FAKTOR F
5°	1,25
10°	1
20°	0,75
30°	0,45
40°	0,30
45°	0,25

Pre dvojite klbove hriadele je vykon 90% z uvedenych momentov