

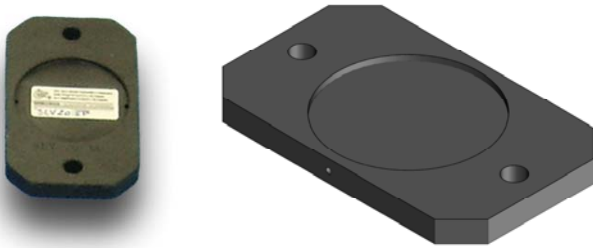
art.UNDERFOOT PAD SLV...SP

**NON-SLIP BASE PLATE**

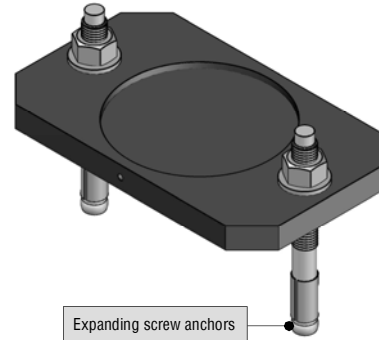
This accessory, for placing under the pivot foot, is designed for applications using our levelling Stabilisers where there is a need for maximum stability of floor positioning with a greater footprint than that offered by the Pivot foot alone. The fixing to the floor takes place by means of two expanding screw anchors (anchors supplied by us together with the plate) so that vibrations will not alter the machine position. The base plates are made from iron (Fe) and nitrided for protection that allows for better wear and resistance to weathering and oxidation.

In cases where there is a risk of structural/machinery tipping, we recommend using our Anti-Tip Brackets as shown on the following pages.

Non-slip base plate.

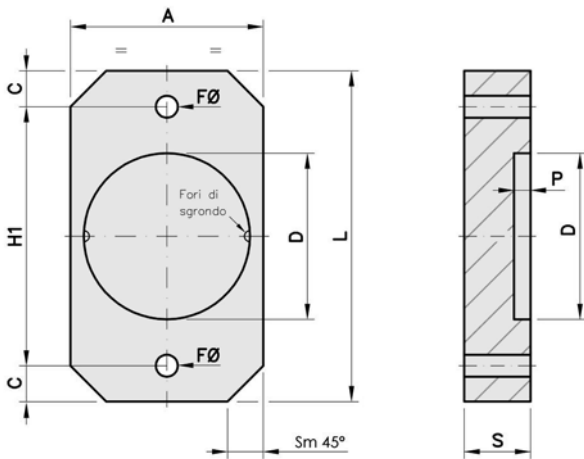


Fitted non-slip base plate.

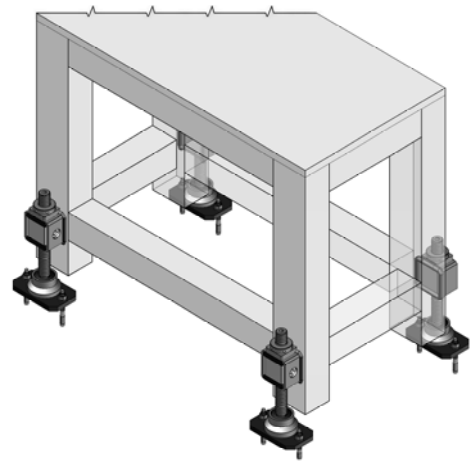


Expanding screw anchors

Diagram of Non-slip base plate.



Example of application using Non-slip base plates.



Approximate weight excluding fitting bolts.

Mod.	CODE	ARTICLE	A	S	L	Sm 45°	FØ	EXPANDING SCREW ANCHORS	H1	C	D	P	WEIGHT Kg
20	2AC0020	SLV 20 SP	70	12	120	12,5	9,5	M8x75	95	12,5	60,3	3	0,600
25	2AC0025	SLV 25 SP	75	12	120	12,5	9,5	M8x75	95	12,5	65,3	3	0,720
30	2AC0030	SLV 30 SP	80	12	150	15	9,5	M8x75	120	15	70,3	3	0,950
35	2AC0035	SLV 35 SP	85	12	150	15	11,5	M10x90	120	15	75,3	3	0,980
40	2AC0040	SLV 40 SP	90	12	150	15	11,5	M10x90	120	15	80,3	3	1,030
45	2AC0045	SLV 45 SP	100	12	160	15	11,5	M10x90	130	15	85,3	3	1,320
50	2AC0050	SLV 50 SP	100	15	160	15	13,5	M12x100	130	15	90,3	4	1,600
55	2AC0055	SLV 55 SP	120	15	180	15	13,5	M12x100	150	15	100,3	4	2,150
60	2AC0060	SLV 60 SP	120	15	180	15	13,5	M12x100	150	15	100,3	4	2,150